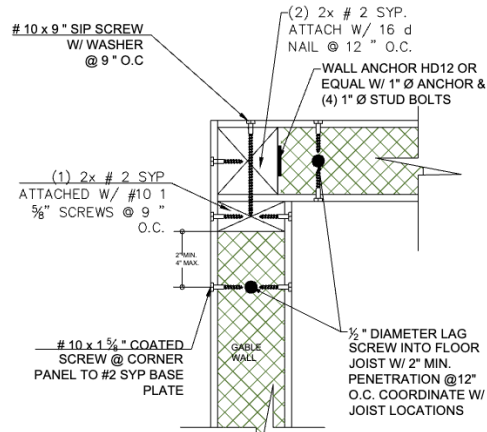
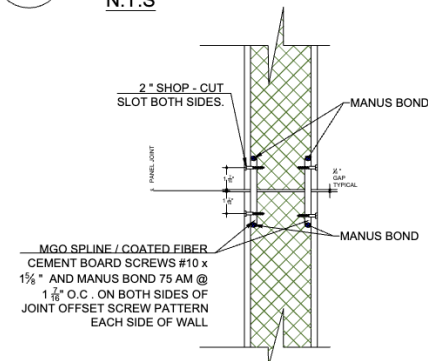




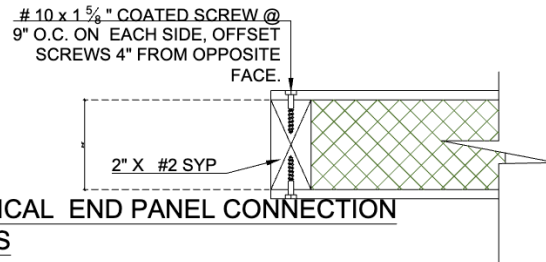
Construction Details



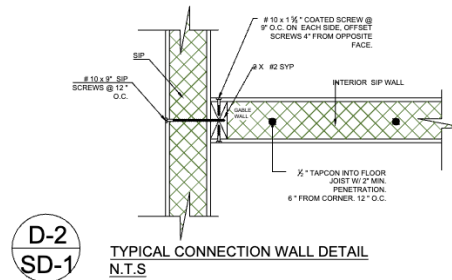
D-1
SD-1
TYPICAL CORNER EXTERIOR PANEL JOINT
N.T.S



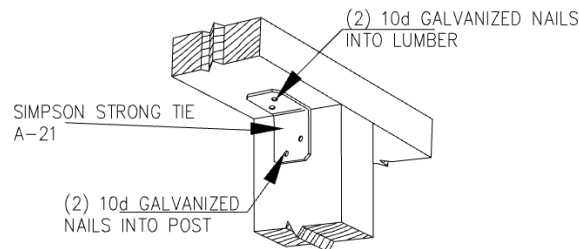
D-4
SD-1
TYPICAL MGO SIPS' S WALL PANEL JOINT
N.T.S



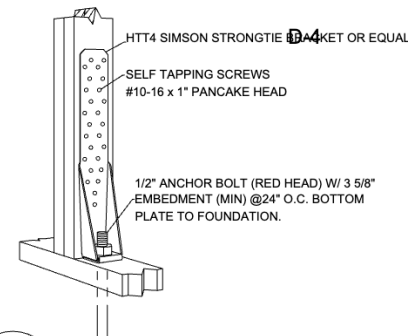
D-7
SD-1
TYPICAL END PANEL CONNECTION
N.T.S



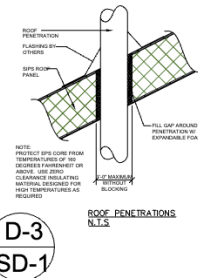
D-2
SD-1
TYPICAL CONNECTION WALL DETAIL
N.T.S



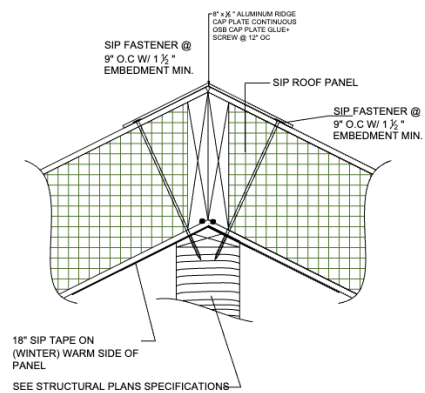
D-5
SD-1
A-21 BRACKET
N.T.S.



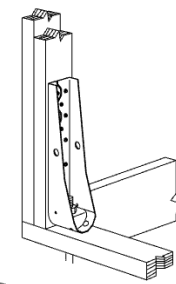
D-8
SD-1
SIMPSON HTT4 BRACKET



D-3
SD-1
ROOF PENETRATIONS
N.T.S



D-6
SD-1
SIPS ROOF HIP (LUMBER CONNECTION) SECTION B-B



D-9
SD-1
SIMPSON HDU5 BRACKET



Diagram illustrating the installation of D-5 and SD-2 lag screws into a concrete wall. The diagram shows two screws being driven into a wall with horizontal reinforcement. Labels include "TOP PLATE", "TOP PLATE", "D-5", "SD-2", and "CONNECTION TO POSTERIOR N.T.S.".

[illegible]

DOUBLE HIP BEAM
(6) SD #10 X 1 $\frac{5}{8}$ "

(2) TOP PLATE TO BE
INSTALLED AND (6) SD
#10 X 2 $\frac{1}{2}$ "

EACH CORNER POST WITH
SD #10 X 2 $\frac{1}{2}$ "

-10
D-2

Diagram illustrating the connection between Ridge Beams and Hip Beams using HHRC-66 Simpson Brackets. The diagram shows a cross-section of the roof structure with the following components labeled:

- HHRC-66 SIMPSON BRACKET
- RIDGE BEAM
- RIDGE BEAM (40) SD #10 X 2 1/2
- EACH HIP BEAM (20) SD #10 X 2 1/2


A circular callout indicates the use of D-6 and SD-2 fasteners.

Diagram illustrating the fastener specification for SIPS floor or roofing panels. The diagram shows a cross-section of a panel with a grid of fasteners. The fasteners are specified as 12" O.C. in rows staggered 6" in both directions. The fasteners are 6" SIPS TAPE ON (WINTER) and 6" SIPS TAPE ON (WINTER) WARM SIDE OF PANEL.

Labels in the diagram include:

- SIPS FLOOR OR ROOFING PANELS
- 6d NAILS @ 4" O.C. BOTH SIDES TOP & BOTTOM (S.U.C.)
- FASTENERS AS SPECIFIED @ 12" O.C. IN ROWS STAGGERED 6" IN BOTH DIRECTIONS
- 6" SIPS TAPE ON (WINTER) WARM SIDE OF PANEL

[illegible]


) TYP HIP ROOF CORNER
CONNECTION BETWEEN
ROOF – SIP WALL
DETAIL
 N.T.S.



2x6 TOP PLATE

2x6 TOP PLATE

6" LAG SCREWS TO BE FULLY INSTALLED

D-5
SD-2

CONN TO P.N.T.S.

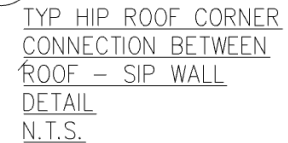
[illegible]

D-2
SD-2



Diagram illustrating a vertical post connection detail. The connection is shown between a vertical post and a horizontal concrete slab. The vertical post is secured to the concrete slab using Simpson Strong-Tie hardware. The hardware includes 10d galvanized nails driven into the post and 3/8 inch tapcons driven through the bracket into the concrete slab. The concrete slab is labeled "CONCRETE SLAB".

D-10
SD-2



D-11
SD-2



D-9
SD-2



HP BEAM 1 TO CONSIST OF
 (1) 12" X 14" OR 14" OR EQUAL
 EXTENDED PAST THE CORNER
 POST

2 GRADE CONNECTOR PLATE
 TO COVER AND CONNECT HP
 BEAMS & HP BEAMS

NOTES OR EQUAL ACCORDING
 TO POST SCHEDULE

HP BEAM 2

Diagram showing a corner post connection. HP BEAM 1 is a vertical beam extending past the corner post. HP BEAM 2 is a horizontal beam. A gusset plate with bolts connects the beams. A connector plate covers the connection. Dimensions include 12" and 14" for the beam size, and 12" for the extension past the post. Notes specify 'NOTES OR EQUAL ACCORDING TO POST SCHEDULE'.